



Old Ford Road, London, E3

BUTLER  STAG





# Brand newly refurbished one bedroom apartment set within a secure canal-side development on the banks of the Hertford Union Canal and the award-winning Victoria Park.



- One Bedroom Canal-Side Apartment
- Open-Plan Kitchen and Living Space
- Secure Gated Development
- Part Furnished
- Brand New Kitchen and Bathroom
- Private Terrace with Tranquil Views
- Victoria Park Location
- Available 28th June 2024

This wonderful ground floor apartment features an open-plan kitchen/living area with a private terrace overlooking the water and the park. Further comprising of a double bedroom with fitted wardrobes and a stylish bathroom, the property is offered part furnished and is available from the end of June.

Empire Wharf is a secure gated development which borders the award-winning Victoria Park, one of east London's most desirable spots and is in close proximity to the renowned and historic Roman Road, home to neighbourhood favourites Zealand Cafe, Brixton Pizza, Mae + Harvey and Whole Fresh, which sit alongside the traditional street market, which runs thrice weekly.

Excellent transport links are nearby, including several bus routes into the City, whilst Bethnal Green underground and Mile End (Central, District and Hammersmith & City) are just about equidistant from the property.

Council Tax Band D  
EPC Rating C







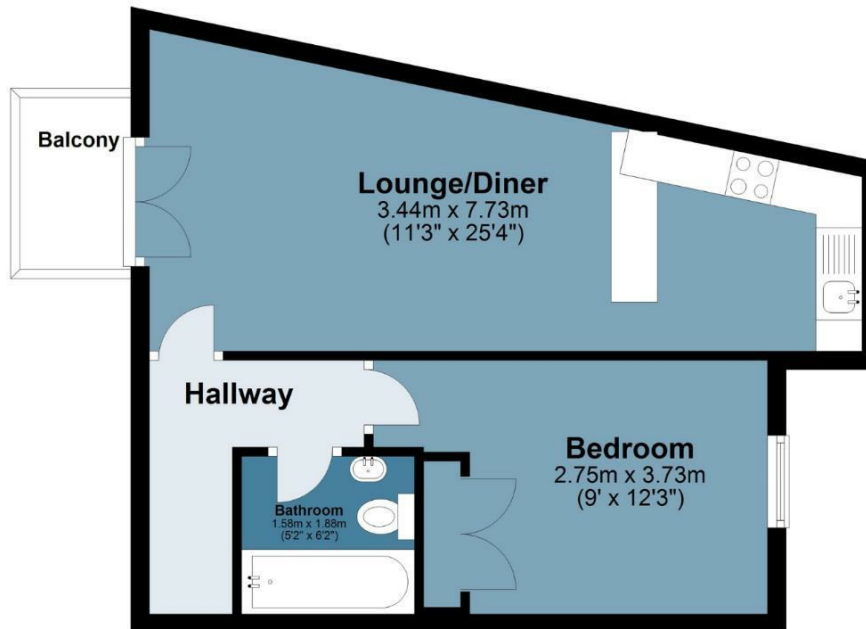
## Empire Wharf

Approx. Gross Internal Area 39.2 sq. metres (421.9 sq. feet)

**BUTLER & STAG**

### Ground Floor

Approx. 39.2 sq. metres (421.9 sq. feet)



Measurements are approximate and for illustration purposes only. While we do not doubt the accuracy and completeness, we advise you conduct a careful independent assessment of the property to determine monetary value  
© @modephotouk www.modephoto.co.uk

IMPORTANT NOTICE - These particulars have been prepared in good faith and they are not intended to constitute part of an offer or contract. We have not performed a structural survey on this property and the services, appliances and specific fittings have not been tested. All photographs, measurements, floor plans and distances referred to are given as a guide and should not be relied upon.

**BUTLER & STAG**

☎ 020 8102 1236

🏠 508 Roman Road, Bow, London, E3 5LU

✉ bow@butlerandstag.com

[www.butlerandstag.uk](http://www.butlerandstag.uk)